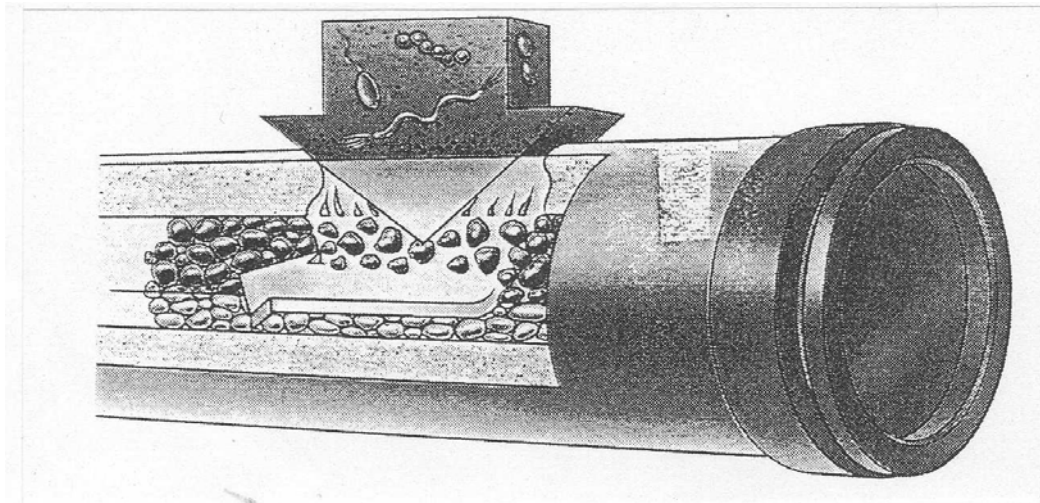


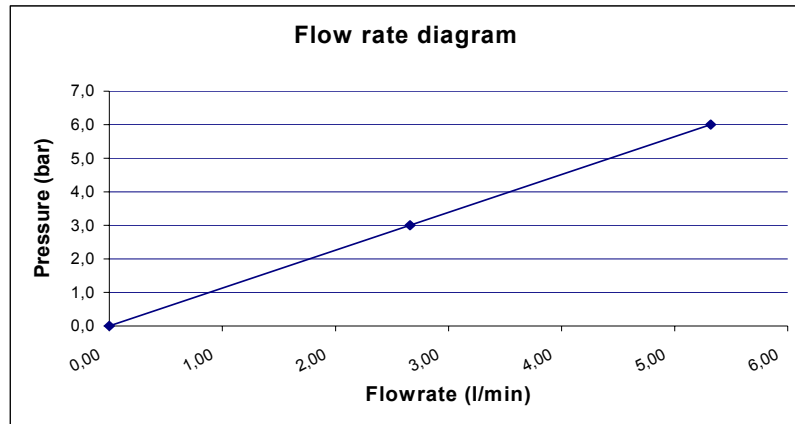
Nr. 4/5

Katadyn Ceramic Element MICROBIOLOGICAL SAFETY

- **Description** 0.0002 mm (0.2 micron) ceramic microfilter. Safely traps all harmful bacteria and retains suspended solids without using chemicals. Filter elements can be cleaned up to 100 times
- **Safety** In the ceramic permanently incorporated Katadyn silver is working against bacteria growth in the filter. The silver quartz in the core of the filter works against bacteria recontamination from the outlet tap. Measuring gauge to control service life.
- **Application** Ceramic filter cartridge for use in industrial filters and hand operated expedition filters.
- **Function** Bacteriological depth microfiltration:



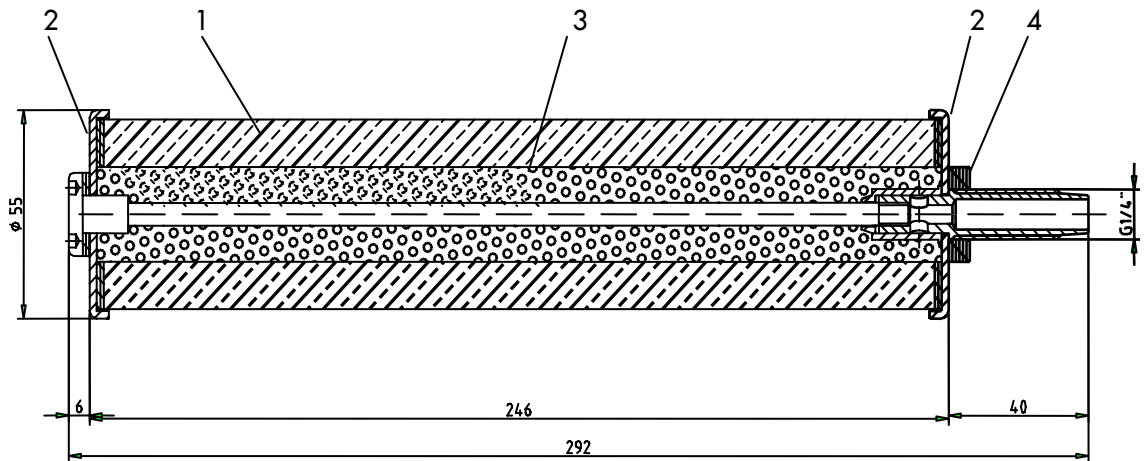
- **Performance** **99.9999 %** removal of pathogenic bacteria (i.e. *Klebsilla* and *Vibrio cholera*)
99.99 % removal of protozoa (i.e. *Cryptosporidium p.* and *Giardia l.*)
No removal of essential minerals.
- **Flow rate** Depending on the filter system in which the cartridge is installed.



Average Capacity 2.6 l/min. (0.66 GPM) at 3 bar (43.5 PSI) and 20 °C (68 °F)

Nr. 4/5 Katadyn Ceramic Element

- Dimensions**



- Materials**

- | | |
|-------------------------------|-------------------------------------|
| 1. ceramic body | diatomaceous earth (main component) |
| 2. end caps, draw bar (Nr. 4) | brass |
| end caps, draw bar (Nr. 5) | stainless steel |
| 3. filling | silvered quartz pebbles |
| 4. outlet seal | EPDM |

All materials are approved for use in drinking water applications

- Thread**

G 1/4" male thread

- **Service Life** Up to 100.000 litres (26.000 gallons). The filter capacity varies with the water quality. The original flow rate can be recovered by simply brushing the surface. Up to 100 cleaning cycles can be done. The measuring gauge indicates when the element has to be replaced because minimal diameter is obtained.
- **Safety** After cleaning the element or at least every second month, it should be completely air-dried before it is used again. Therefore we recommend to have two candles in opposite cycles in use.
- **Operation Pressure** Max. 7 bar / 100 psi, t < 35°C / 95°F
- **Weight** Dry: approx. 640 g (34.8 oz)
Wet: approx. 840 g (45.6 oz)
- 0°C (32°F) ← **Temperature for use** → 80°C (176°F)
- **Filter rating** Ceramic micro filter 0.2 micron (0.0002 mm)
- **Article no.** 1040 (Nr. 4)
Article no. 1250 (Nr. 5)

Katadyn Products Inc.

Birkenweg 4, CH-8304 Wallisellen, Switzerland

Tel. ++41 1/839 21 11, Fax ++41 1/830 79 42

E-Mail: katadyn@katadyn.ch

Internet: <http://www.katadyn.ch>